

## SURVEILLANCE AND CONTACT TRACING



Developed COVID KAYA information system with the DOH for surveillance and contact tracing



Joint risk assessment with partners on detention facilities and health facilities



Supported DOH in strengthening surveillance and contact tracing process flow

## HEALTH SYSTEMS



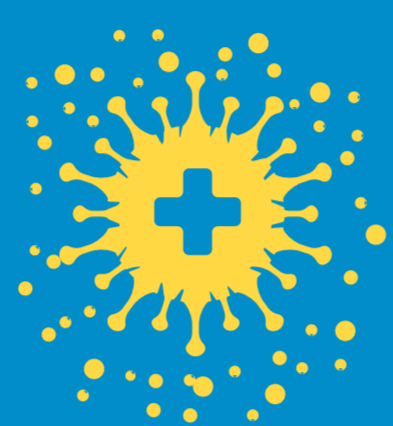
Supported the DOH and DILG in drafting policies to form health care provider networks



Supported health workers through a webinar series on clinical management

## INFECTION PREVENTION AND CONTROL (IPC)

Developed and conducted online IPC training for frontline health care workers (HCW) with partners



Assessment on reported infection of health workers, the compliance of IPC guidelines, and appropriate use of PPEs in hospitals

Provided critical guidelines on infection prevention and control to the DOH



Provided personal protective equipment for health workers to the DOH

23

## LABORATORIES



Supported DOH accreditation of testing laboratories. To date, there are 23 rRT-PCR\* laboratories testing nationwide

Supported DOH participation in the WHO Solidarity trial

Technical support on convalescent plasma and genetic and rapid antibody tests

Provided laboratory supplies and kits to the Research Institute for Tropical Medicine (RITM)

\*Real-time reverse transcription polymerase chain reaction

## LOGISTICS



Using WHO projection tools, assisted the DOH in the recalibration of PPE requirements

Provided technical inputs to the DOH on distribution flow of PPE and essential supplies



Supported building an information system for tracking of essential COVID-19 commodities



Managed transportation for surge nurse from DOH for daily activities and field missions

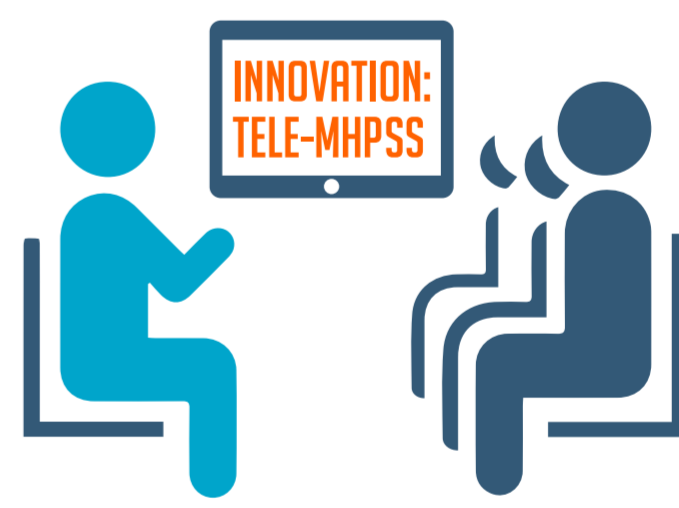
## MENTAL HEALTH AND PSYCHOSOCIAL SUPPORT (MHPSS)



Promoted mental health and psychosocial well-being



Integrated MHPSS within health and social services and increasing access to care



Strengthened community-based interventions and social support

## NON-PHARMACEUTICAL INTERVENTIONS (NPI)



Supported development of the DOH policy on NPIs



Conducted rapid assessment on LGU capacity on NPI and as guide to increasing LGU engagement, and development of LGU tools and training



Conducted rapid policy-gap analysis on NPIs

## REGIONAL OPERATIONS

### 10 SCOPING MISSIONS

Accomplished needs and capacity assessment of nine CHDs and MOH BARMM on COVID response

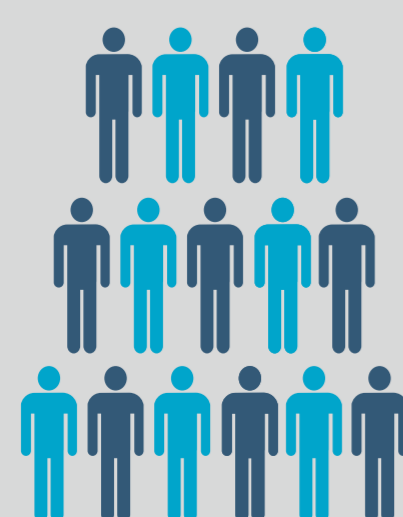
### 6 REGIONAL DEPLOYMENTS

Deployed seven (7) technical staff to six (6) CHDs to support regional response

### 3 CONTACT TRACING TOOLS

Developed three (3) training tools on contact tracing: online training module, promotional video, and instructional video

## RISK COMMUNICATION AND INFORMATION MANAGEMENT



Supported the DOH in reaching over 15,000 respondents to understand their information needs and feedback on DOH response



Released various communication materials on the risk of COVID-19 using social media broadcast and out-of-home platforms



Supported the DOH on risk communication messaging and strategies and localization of risk communication products



Issued regular situation reports on COVID-19 in the Philippines